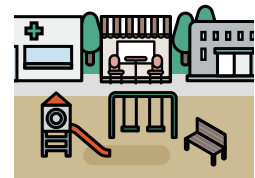
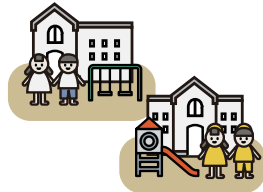


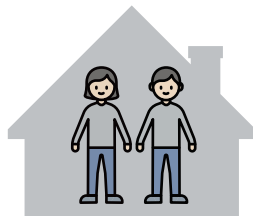
## 금천장애인종합복지관은



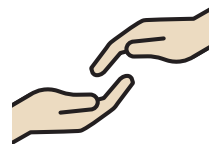
장애인들이



집(가정) 어린이집/유치원 학교 동네(지역사회)에서



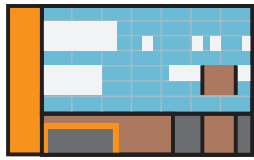
사는 것을



도와줍니다.



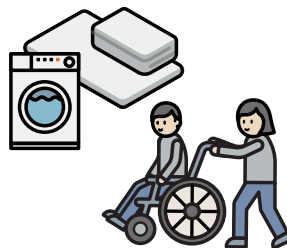
# ? 무엇



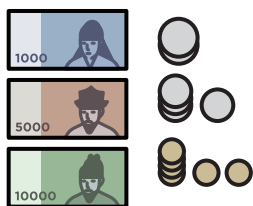
금천장애인종합복지관은 무엇을 해요?



취업상담



일상생활



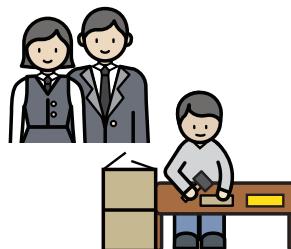
돈(경제)



집(주거)



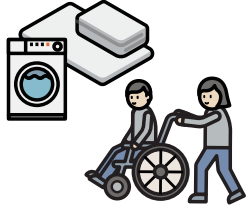
재활



교육·문화를 해요.



# ? 무엇

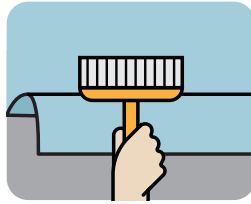


일상생활서비스에서는

무엇을 해요?



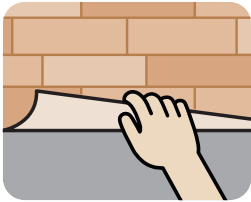
반찬배달



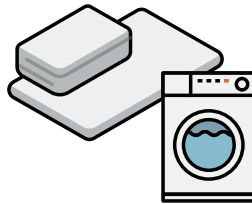
도배



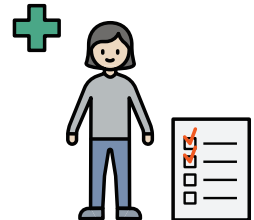
이미용



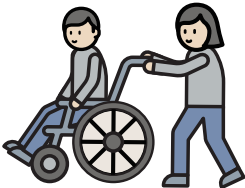
장판



이불



건강



이동



이사를 해요.



? 무엇



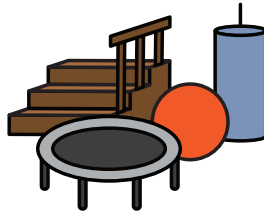
재활치료에서는



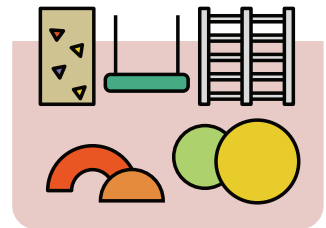
무엇을 해요?



음악



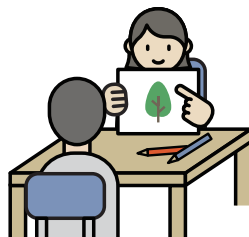
물리



작업



언어

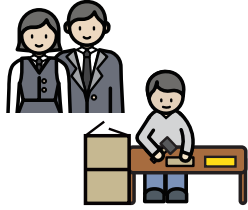


미술을 해요.





? 무엇



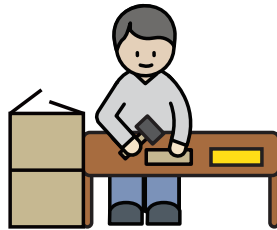
교육프로그램에서는



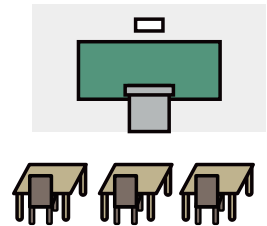
무엇을 해요?



사회적응



직업



학교

기  
나  
다  
르  
  
ㅏ  
ㅑ  
ㅓ  
ㅕ

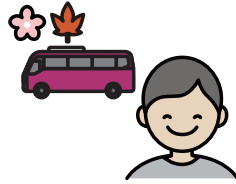
한글



청소년방과후를 해요.

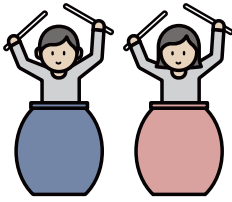


? 무엇



문화프로그램에서는

무엇을 해요?



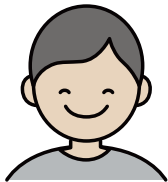
난타



댄스



요리



웃음



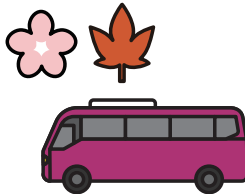
풍물



노래



공예



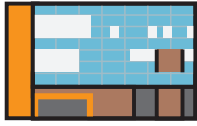
여행



연극을 해요.



누구



복지관은



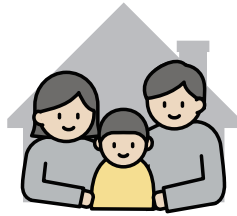
누가



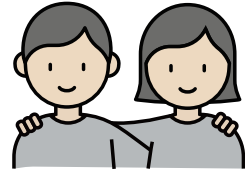
와요?



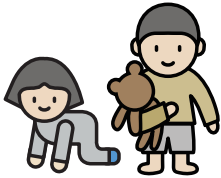
장애인



가족



친구



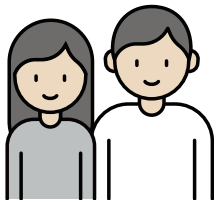
영유아



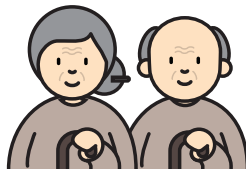
아동



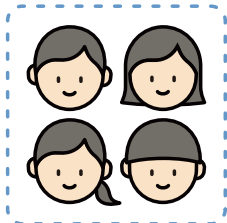
청소년



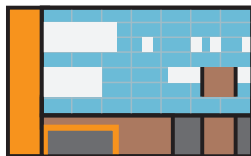
성인



노인



모두



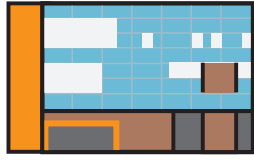
복지관에



와요.



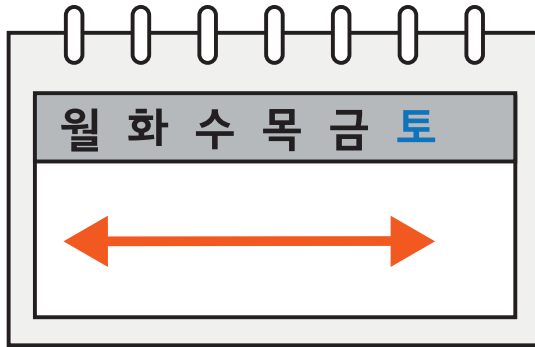
언제



금천장애인종합복지관은



언제 해요?



월 화 수 목 금 토

월

화

수

목 금 토

목

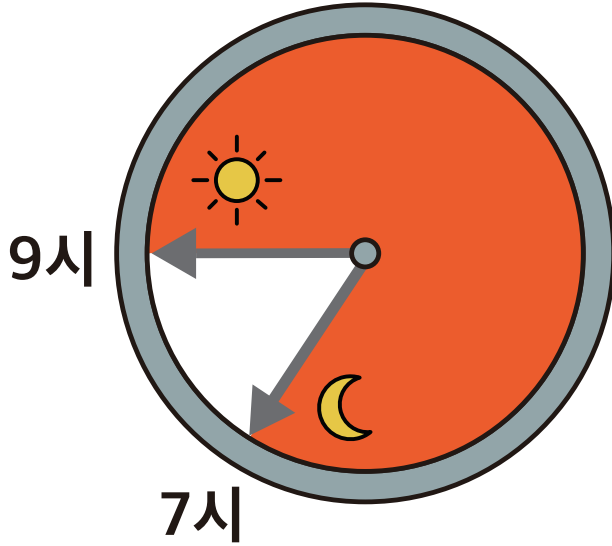
금

토에 해요.





? 언제



9



7

아침

9시부터

저녁

7시까지 해요.



# 어디



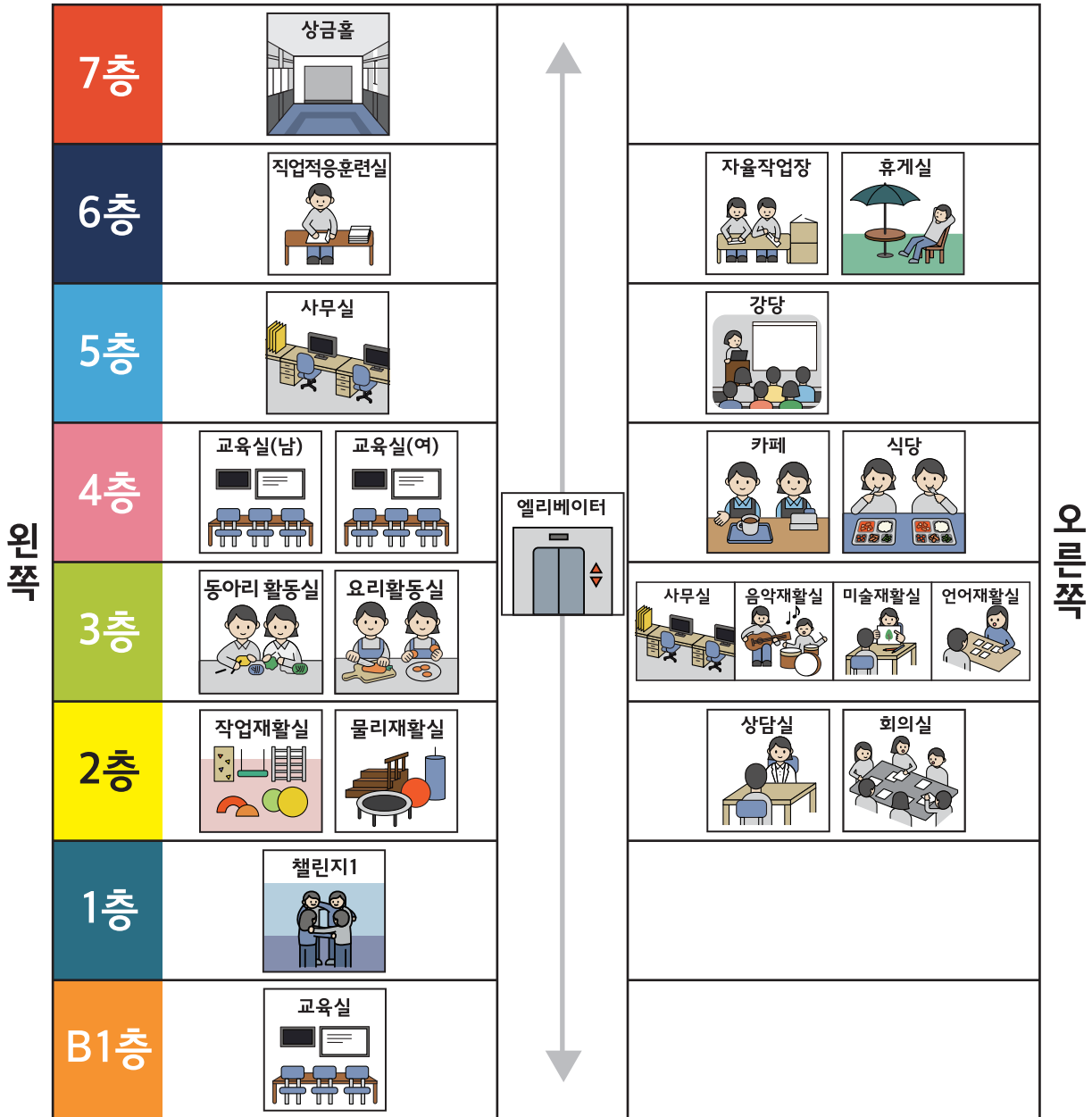
프로그램



어디서

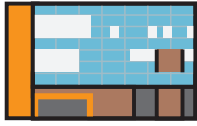


해요?





# 어떻게



복지관



어떻게

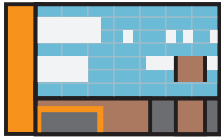


신청해요?



## ← 먼저

1.



복지관에



전화해요.

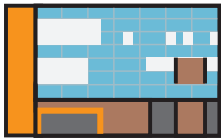


**02) 6912 - 8000**

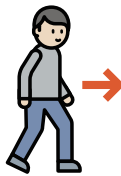
전화번호는

02) 6912 - 8000 입니다.

2.



복지관에



가요.

3.



상담해요.

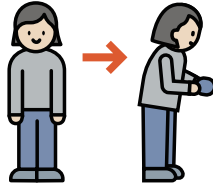


나중

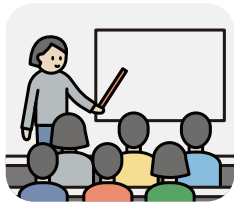
1.



프로그램



해요.



프로그램



끝나면

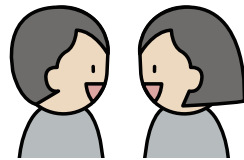
2.



좋아요.



안 좋아요.

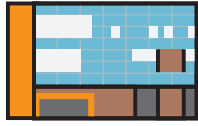


이야기해요.





# 어떻게



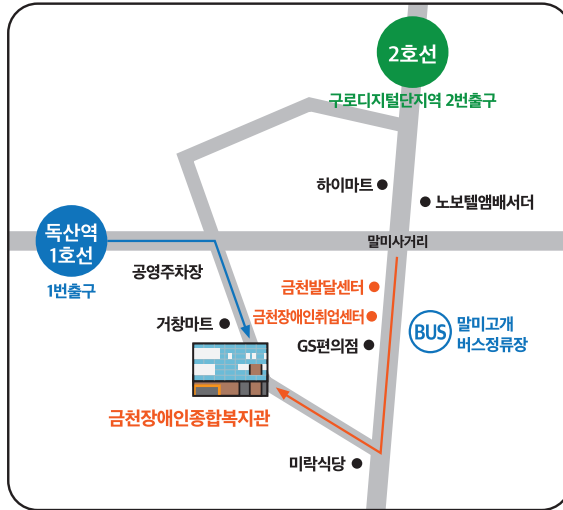
복지관



어떻게



가요?

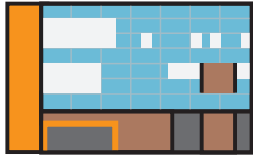


 주소: 서울시 금천구 시흥대로 101길 17

1.  지하철  1호선  독산역에서  내려요
2.  1번  출구로 나와요
3.  10분  걸어요



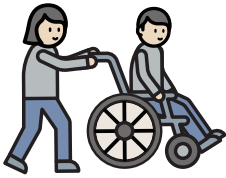
 전화해요



금천장애인종합복지관에



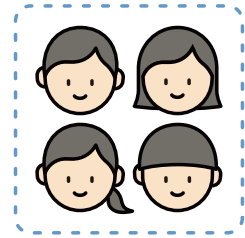
전화해요.



자원봉사와



후원하고 싶은



사람들



전화 주세요.



**02) 6912 - 8000**

전화번호는 02) 6912 - 8000 입니다.

[gcasts@hanmail.net](mailto:gcasts@hanmail.net)

 E-mail



카카오톡 플러스친구  
@금천장애인종합복지관

